



WESTLIN

A PICTORIAL TOUR

**FOR MORE INFORMATION
WESTLIN CORPORATION
550 CLUB DRIVE, SUITE 410
MONTGOMERY, TEXAS 77356
(936) 582-5950**



**VIEW FROM
THE FRONT
LOOKING
SOUTH**



**LOOKING WEST
ACROSS THE
FRONT OF THE
BUILDING**



**THE FRONT
LOBBY AND
RECEPTIONIST
AREA**



THE FIRST FLOOR FRONT BAR (USED FOR PRESENTATIONS AND MEETING AREA)

FIRST FLOOR HOT SITE AREAS

ALL OUTSIDE WINDOWS ARE BULLETPROOF GLASS



ANOTHER VIEW OF THE HOT-SITE AREAS. THESE ARE CUSTOM BUILT FOR EACH CLIENT



**OUTDOOR SWIMMING
POOL**

**IT ALSO PROVIDES
EMERGENCY WATER
FOR THE SPRINKLERS
IN THE EVENT OF A
FIRE**

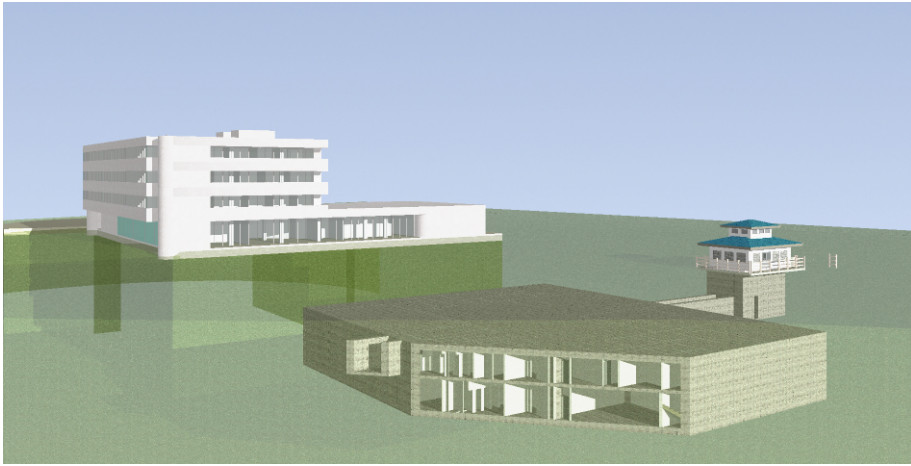
THE “PAGODA”

**THESE WERE THE
ORIGINAL ENTRANCES
TO THE UNDERGROUND
BUNKER**



**ONE OF THE GUN
PORTS IN THE
PAGODA. THE
PAGODAS AND
GAZEBO WERE
THE LINES OF
DEFENSE FOR
THE BUNKER**





**A CUTAWAY VIEW
OF THE BUNKER
OUTSIDE THE
OFFICE
BUILDING. THE
BUNKER
EXTENDS TO A
DEPTH OF 50'
UNDERGROUND**

**OUR SECURITY BUILDING PROVIDES ACCESS TO THE
ELEVATOR TO THE BUNKER AND IS EXTENSIVELY
EQUIPPED WITH CAMERA COVERAGE AND BIOMETRIC
ACCESS**

**THE INSIDE OF
THE SECURITY
BUILDING
SHOWING THE
EQUIPMENT
HOLDING AND
SEARCH AREA**

**ALL INBOUND
DELIVERIES
ARE
INSPECTED
BEFORE BEING
CLEARED INTO
THE FACILITY**



**EXITING THE ELEVATOR
ON THE FIRST FLOOR
YOU SEE OPERATIONS
AND THE CABINET
COLLOCATION AREA**



ANOTHER VIEW OF THE NOC AREA AND A CUSTOM SUITE BEHIND IT

NO CELL PHONES OR RADIOS WORK HERE! ALSO, NOTICE THE SECURITY CAMERAS IN THE CEILING

NETWORK OPERATIONS



ONE OF THE TOP FLOOR SPACES AFTER BUILD-OUT FOR A CUSTOMER



**SHARED COLLOCATION
AREA**

**WE COLLOCATE SINGLE
CUSTOMER SERVERS HERE**

**ONE OF THE
THREE DIGITAL
VIDEO
RECORDERS
THAT MONITORS
AND RECORDS
ALL AREAS OF
THE FACILITY**



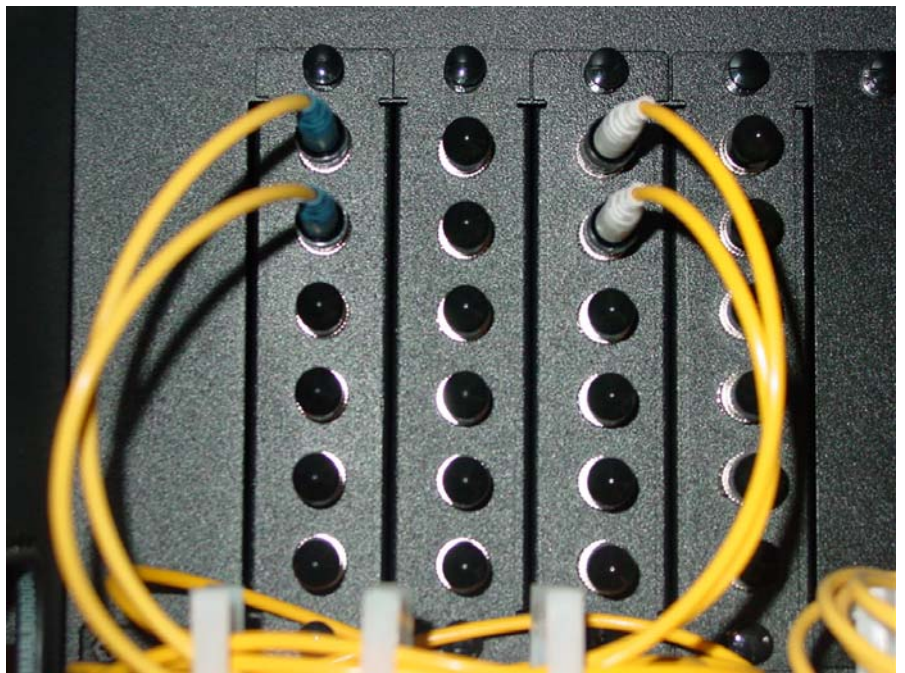
**WE STILL HAVE SEVERAL
OF THE OLD JAIL CELLS
THAT CAN BE USED FOR
UNIQUE STORAGE
APPLICATIONS**



**ORIGINALLY
INTENDED AS
CONJUGAL ROOMS,
THESE 14 ROOMS ARE
NOW BEING LEASED AS
PRIVATE TAPE
STORAGE SUITES**

**THESE SUITES ARE
PERFECT FOR A LARGE
NUMBER OF BACKUP
TAPES FOR SECURE
OFF-SITE STORAGE**

**THE BUNKER
ALSO OFFERS THE
LATEST IN FIBER
OPTIC SERVICES
WITH FULL
SONET BASED
SERVICES FROM
T1 TO OC48**



**THE INTERIOR OF
THE PAGODA
SHOWING THE
ORIGINAL
FIGHTING
POSITIONS AND
GUN PORTS**



**TWO SETS OF
BLAST DOORS
PROTECT THE
BUNKER AND
YOUR DATA
FROM OUTSIDE
FORCES**

**THE ACCESS
TUNNELS FROM
THE PAGODA WERE
THE ORIGINAL
ENTRIES AND NOW
SERVE AS OUR
EMERGENCY
EXITS**



**THE LOWER
FLOOR WAS
ORIGINALLY
DORMITORY
SPACE AND IS
AVAILABLE NOW
FOR LEASE BY
THE SQUARE
FOOT FOR LARGE
INSTALLATIONS
FROM 500 TO
10,000 SQ FEET**

**WE CAN BUILD TO
SUIT ANY AREA
DOWN HERE FOR
CUSTOM
APPLICATIONS.
THIS IS AN IN-
PROGRESS VIEW
OF A CUSTOM 1800
SQ FOOT SUITE
FOR ONE OF OUR
CLIENTS**



**REDUNDANT POWER
FEEDS AND AMPLE
COOLING PROVIDE A
STABLE SERVER
ENVIRONMENT**

**ADDITIONAL
PHOTOS OF THE
ELECTRICAL AND
PHYSICAL PLANT
CONTROLS
WE HAVE AN IN-
HOUSE
ENGINEERING
STAFF TO
MAINTAIN THE
EQUIPMENT**





**THREE GENERATORS
AND A TOTAL OF 57,000
GALLONS OF FUEL
STORAGE PROVIDE A
60 DAY RUN TIME FOR
THE FACILITY
WITHOUT OUTSIDE
UTILITIES**

**BACK IN THE OFFICE
BUILDING YOU CAN
SEE THE ATRIUM
DESIGN USED FOR
FLOORS 2 THROUGH
4**



**THE OPEN
CONCEPT SHOWS
OFF OUR 95,000
SQUARE FEET OF
BUILDING AREA**



THE OFFICE SPACE IS DEFINITELY CLASS A SPACE. OFFICES EITHER FACE OUTDOORS OR INTO THE ATRIUM

DEL LAGO, A LOCAL RESORT IS ONLY 3 MILES AWAY OFFERING EVERY LAKE AMENITY AVAILABLE. FULL NETWORK CONNECTIONS ARE INSTALLED BETWEEN OUR SITE AND THEIRS FOR OUR DISASTER RECOVERY EFFORTS



OUR FACILITY ALSO OFFERS HELIPAD FOR QUICK ACCESS FOR CLIENTS AND GUESTS

THE WESTLIN CAMPUS

**THE ULTIMATE IN DATA SECURITY AND ADVANCED
CORPORATE SOLUTIONS**



**FOR FURTHER INFORMATION PLEASE CHECK OUR
WEB SITE**

WWW.WESTLIN.COM

WE CAN ALSO REACHED BY

EMAIL

SALES@WESTLIN.COM

PHONE

936-582-5950

**WE LOOK FORWARD TO WORKING WITH YOU ON
YOUR BUSINESS CONTINUITY AND DISASTER
RECOVERY NEEDS.**